



1090 Bristol Road  
Mountainside, NJ 07092  
(908) 654-8068  
(800) 783-0567  
Fax 908-654-8069

## LEAD IN DRINKING WATER REPORT

**Performed At:**

Keansburg School District  
100 Palmer Place  
Keansburg NJ 07734

**Performed For:**

Keansburg School District  
100 Palmer Place  
Keansburg NJ 07734

**Prepared By:**

LEW Corporation  
1090 Bristol Road  
Mountainside, NJ 07092

Phone (908) 654-8068  
Fax (908) 654-8069  
Website <http://www.LEWCorp.com>

Inspection Date: 4/13/2017  
Project Number: 161062

# **Table of Contents**

Contact Information .....	3
Introduction .....	4
Sampling Methodology .....	4
Drinking Water Results .....	5
Recommendations .....	6

## **Appendices**


Appendix A	Exceedances
Appendix B	Recommendations
Appendix C	All results
Appendix D	Floor Plan(S)
Appendix E	Laboratory Data

## Contact Information

### Agency

Client Contact:	David Cooney
Client Name:	Keansburg School District
Street Address:	100 Palmer Place Keansburg NJ 07734
Phone Number:	732-787-2007

### Risk Assessor(s)

Site Assessor(s):	Neil Wendt
License:	NJDOH #030091
Signature:	
Date:	6/14/2017
E-Mail	nwendt@lewcorp.com

### Firm

Organization:	LEW Corporation
Certification #:	NJDCA 00015 E
Street:	1090 Bristol Road
City, State & Zip:	Mountainside, New Jersey 07092
Phone Number:	908-654-8068
Web Address:	<a href="http://www.lewcorp.com">http://www.lewcorp.com</a>

### Laboratory

Organization:	Environmental Hazard Services, LLC
Street:	7469 Whitepine Road
City, State & Zip:	Richmond, VA 23237
NJDEP Certification #	VA008
Phone Number:	800-347-4010

## **Introduction**

LEW Corporation was contracted by Keansburg School District to test for the presence of lead in drinking water in 5 schools in the district.

## **Sampling Methodology**

LEW Corporation followed the July 13, 2016 amendments to NJAC 6A:26. Full details on sampling practices can be found in Districts Sampling Plan.

All samples were collected in 250mL wide mouth plastic containers that was prepackaged by the analytical laboratory. The sample containers may contain nitric acid, if expedited analysis is required. If not, nitric acid will be added to each sample upon arrival at the laboratory. At each sample location, the first draw sample was taken after it was determined that the water had been standing in the plumbing system for greater than eight hours but less than forty-eight hours. If second draw samples were collected, they were collecting following a flushing protocol outlined in the District's Sampling Plan.

# Drinking Water Results

On April 14 & 17 2017, LEW Corporation collected the following number of water samples:

## Caruso Elementary

- 45 first draw samples collected
- 1 samples above the 15ppb action level

## J R Bolger Middle School

- 35 first draw samples
- 1 samples above the 15ppb action level

## Keansburg High School

- 21 first draw samples
- 0 samples above the 15ppb action level

## Caruso Pre K School

- 12 first draw samples
- 0 samples above the 15ppb action level

## Port Monmouth Pre K School

- 9 first draw samples
- 0 samples above the 15ppb action level

On May 20, 2017, LEW Corporation returned to collect the following number of samples:

## Caruso Elementary School

- 3 first draw samples
- 0 samples above the 15ppb action level

The complete list of samples that exceeded the 15ppb limit can be found in Appendix A. The complete list of all sample results can be found in Appendix C. The laboratory results can be found in Appendix E.

Certain outlets could not or were not tested due to various reasons. The following table lists those locations and the reason why samples were not collected.

School	Sample Location	Reason for not testing.
Port Monmouth pre-k	Room 5	Not working-Outlet to be removed
Port Monmouth pre-k	Room 2	Not working-Outlet to be removed

## Recommendations

Those outlets where the first draw sample tested below 15ppb are not considered to be elevated and no mitigation is necessary.

For those outlets where the first draw sample exceeds 15ppb the following steps are recommended:

- 1) Immediately discontinue use of the outlets.
- 2) Conduct second draw (flush) samples on these outlets to further delineate source of contamination.

A complete list of recommendations per outlet can be found in Appendix B.

## Additional Recommendations

- 1) Follow-up samples should be collected after any remediation efforts in order to determine the efficacy of the work.
- 2) Any of the inoperable/non-functioning outlets listed above that are brought back into service should be sample.
- 3) Comply with all requirements set forth in NJAC 6A:26.

## Appendix A Exceedances

Building	DateCollected	AnalysisDate	Sample ID	Sample Description	Concentration (ppb)
Caruso Elementary	4-17-2017	4-25-2017	35 CE S	RM A 111	18.2
J R Bolger Middle	4-13-2017	4-27-2017	22-JBM-DW	Trailer #2	55.1

## Appendix B Recommendations

Building	Location	Remediation Recommendation
Caruso Elementary	RM A 111	Discontinue use and perform 2 <sup>nd</sup> draw (flush) sampling
J R Bolger Middle	Trailer #2	Discontinue use and perform 2 <sup>nd</sup> draw (flush) sampling



## Appendix C All Results

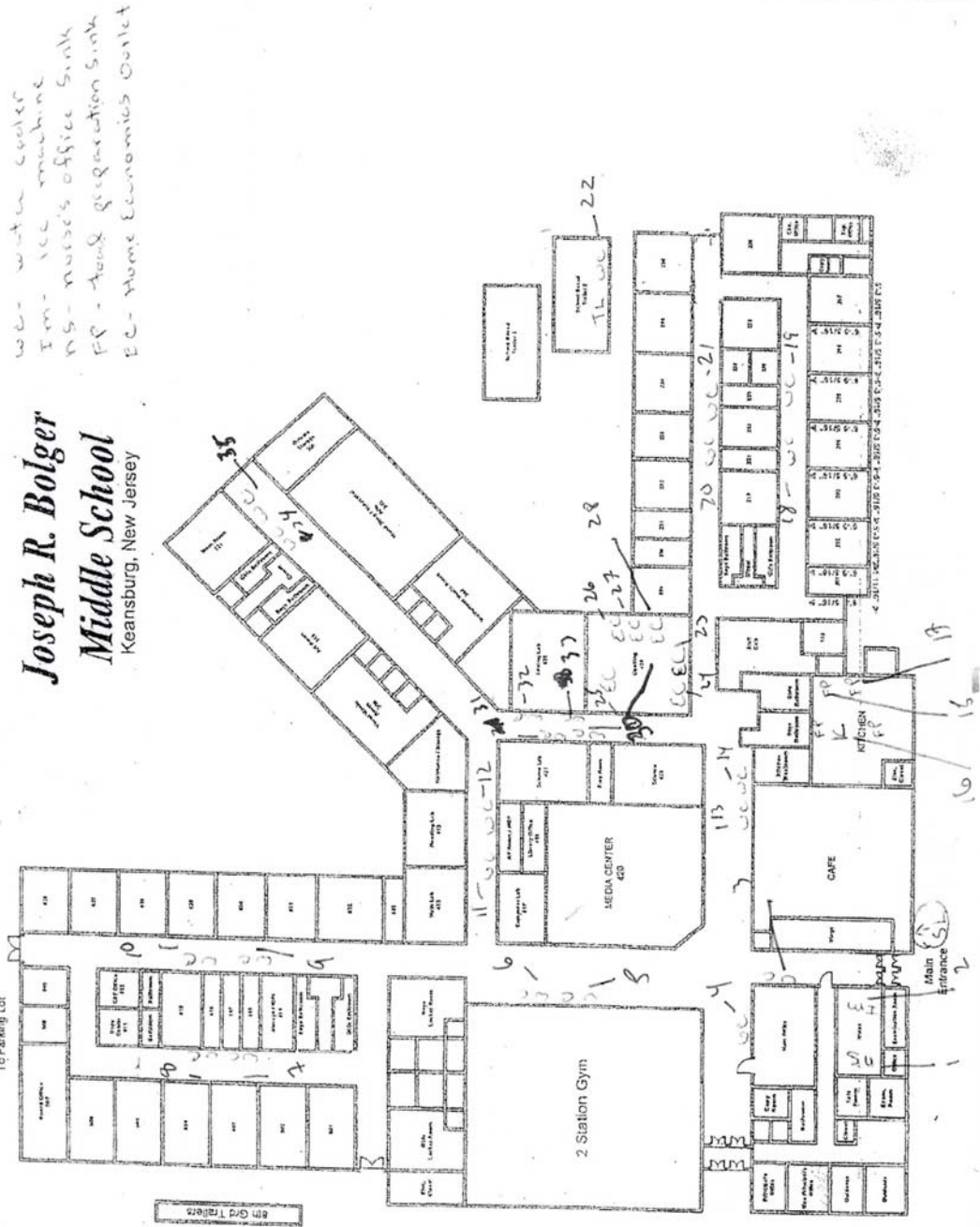
Building	DateCollected	AnalysisDate	Sample ID	Sample Description	Concentration (ppb)
ALL SAMPLES ALL SCHOOLS ARE 1ST DRAW SAMPLES					
Keansburg HS	4-13-2017	4-26-2017	1 KHS S	MAIN OFFICE	<1.00
Keansburg HS	4-13-2017	4-26-2017	2 KHS NS	NURSE OFFICE	1.24
Keansburg HS	4-13-2017	4-26-2017	3 KHS DW	KAP TRAILER	<1.00
Keansburg HS	4-13-2017	4-26-2017	4 KHS WC	GIRLS LOCKER RM	<1.00
Keansburg HS	4-13-2017	4-26-2017	5 KHS DW	RM 105 HALL	1.10
Keansburg HS	4-13-2017	4-26-2017	6 KHS WC	RM 105 HALL	<1.00
Keansburg HS	4-13-2017	4-26-2017	7 KHS S	RM 110	2.49
Keansburg HS	4-13-2017	4-26-2017	8 KHS DW	RM 162 HALL	<1.00
Keansburg HS	4-13-2017	4-26-2017	9 KHS DW	RM 162 HALL	<1.00
Keansburg HS	4-13-2017	4-26-2017	10 KHS IM	KITCHEN	<1.00
Keansburg HS	4-13-2017	4-26-2017	11 KHS FP	KITCHEN OVEN	13.3
Keansburg HS	4-13-2017	4-26-2017	12 KHS FP	KITCHEN KETTLE	6.16
Keansburg HS	4-13-2017	4-26-2017	13 KHS FP	KITCHEN SINK	1.29
Keansburg HS	4-13-2017	4-26-2017	14 KHS WC	CAFETERIA HALL	<1.00
Keansburg HS	4-13-2017	4-26-2017	15 KHS WC	CAFETERIA HALL	<1.00
Keansburg HS	4-13-2017	4-26-2017	16 KHS WC	BOYS LOCKER RM	<1.00
Keansburg HS	4-13-2017	4-26-2017	17 KHS IM	BOYS LOCKER RM	<1.00
Keansburg HS	4-13-2017	4-26-2017	18 KHS DW	RM 204 HALL	2.01
Keansburg HS	4-13-2017	4-26-2017	19 KHS WC	RM 204 HALL	<1.00
Keansburg HS	4-13-2017	4-26-2017	20 KHS WC	CAFETERIA	<1.00
Keansburg HS	4-13-2017	4-26-2017	21 KH5 WC	CAFETERIA	<1.00
Keansburg HS	4-13-2017	4-26-2017	22 ASTM BLANK	BLANK	<1.00
J Bolger Middle	4-13-2017	4-27-2017	1-JBM-NS	NURSE OFFICE	<1.00
J Bolger Middle	4-13-2017	4-27-2017	2-JBM-IM	NURSE OFFICE	<1.00
J Bolger Middle	4-13-2017	4-27-2017	3-JBM-WC	NURSE HALL	<1.00
J Bolger Middle	4-13-2017	4-27-2017	4-JBM-WC	ADMIN HALL	<1.00
J Bolger Middle	4-13-2017	4-27-2017	6-JBM-WC	IMC 420 HALL	<1.00
J Bolger Middle	4-13-2017	4-27-2017	7-JBM-WC	RM 501 HALL	<1.00
J Bolger Middle	4-13-2017	4-27-2017	8-JBM-WC	RM 501 HALL	<1.00
J Bolger Middle	4-13-2017	4-27-2017	9-JBM-WC	RM 531 HALL	<1.00
J Bolger Middle	4-13-2017	4-27-2017	10-JBM-WC	RM 531 HALL	<1.00
J Bolger Middle	4-13-2017	4-27-2017	11-JBM-WC	RM 413 HALL	<1.00
J Bolger Middle	4-13-2017	4-27-2017	12-JBM-WC	RM 413 HALL	<1.00
J Bolger Middle	4-13-2017	4-27-2017	13-JBM-WC	FACULTY DINING HALL	<1.00
J Bolger Middle	4-13-2017	4-27-2017	14-JBM-WC	FACULTY DINING HALL	<1.00
J Bolger Middle	4-13-2017	4-27-2017	15-JBM-FP	KITCHEN SINK	<1.00
J Bolger Middle	4-13-2017	4-27-2017	16-JBM-FP	KITCHEN KETTLE	2.14
J Bolger Middle	4-13-2017	4-27-2017	17-JBM-FP	KITCHEN SINK	1.51
J Bolger Middle	4-13-2017	4-27-2017	18-JBM-WC	RM 204 HALL	<1.00

J Bolger Middle	4-13-2017	4-27-2017	19-JBM-WC	RM 204 HALL	<1.00
J Bolger Middle	4-13-2017	4-27-2017	20-JBM-WC	RM 233 HALL	<1.00
J Bolger Middle	4-13-2017	4-27-2017	21-JBM-WC	RM 233 HALL	<1.00
J Bolger Middle	4-13-2017	4-27-2017	22-JBM-	TRAILER #2	55.1
J Bolger Middle	4-13-2017	4-27-2017	23-JBM-EC	RM 429	2.14
J Bolger Middle	4-13-2017	4-27-2017	24-JBM-EC	RM 429	10.4
J Bolger Middle	4-13-2017	4-27-2017	26-JBM-EC	RM 429	<1.00
J Bolger Middle	4-13-2017	4-27-2017	27-JBM-EC	RM 429	<1.00
J Bolger Middle	4-13-2017	4-27-2017	28-JBM-EC	RM 429	<1.00
J Bolger Middle	4-13-2017	4-27-2017	29-JBM-EC	RM 429	2.81
J Bolger Middle	4-13-2017	4-27-2017	32-JBM-EC	RM 425 HALL	<1.00
J Bolger Middle	4-13-2017	4-27-2017	33-JBM-EC	RM 425 HALL	<1.00
J Bolger Middle	4-13-2017	4-27-2017	34-JBM-WC	RM 305 HALL	<1.00
J Bolger Middle	4-13-2017	4-27-2017	35-JBM-WC	RM 305 HALL	1.01
J Bolger Middle	4-13-2017	4-27-2017	36-ASTM BLANK	BLANK	<1.00
Caruso Elementary	4-17-2017	4-25-2017	1 CE S	RM C-110	1.99
Caruso Elementary	4-17-2017	4-25-2017	2 CE FP	KITCHEN	<1.00
Caruso Elementary	4-17-2017	4-25-2017	3 CE FP	KITCHEN OVEN	9.97
Caruso Elementary	4-17-2017	4-25-2017	4 CE FP	KITCHEN KETTLE	<1.00
Caruso Elementary	4-17-2017	4-25-2017	5 CE FP	KITCHEN	3.86
Caruso Elementary	4-17-2017	4-25-2017	6 CE FP	KITCHEN	3.49
Caruso Elementary	4-17-2017	4-25-2017	7 CE KC	KITCHEN	<1.00
Caruso Elementary	4-17-2017	4-25-2017	8 CE DW	RM B 102	<1.00
Caruso Elementary	4-17-2017	4-25-2017	9 CE DW	RM B 104	<1.00
Caruso Elementary	4-17-2017	4-25-2017	10 CE DW	RM B 106	<1.00
Caruso Elementary	4-17-2017	4-25-2017	11 CE DW	RM B 108	<1.00
Caruso Elementary	4-17-2017	4-25-2017	12 CE WC	CUST. B 100E	<1.00
Caruso Elementary	4-17-2017	4-25-2017	13 CE WC	CUST. B 100E	<1.00
Caruso Elementary	4-17-2017	4-25-2017	14 CE DW	RM B 116	<1.00
Caruso Elementary	4-17-2017	4-25-2017	15 CE WC	MAIN OFFICE	<1.00
Caruso Elementary	4-17-2017	4-25-2017	16 CE WC	MAIN OFFICE	<1.00
Caruso Elementary	4-17-2017	4-25-2017	17 CE S	MAIN OFFICE	<1.00
Caruso Elementary	4-17-2017	4-25-2017	18 CE S	RM A 104	4.37
Caruso Elementary	4-17-2017	4-25-2017	19 CE WC	GYM	<1.00
Caruso Elementary	4-17-2017	4-25-2017	20 CE WC	GYM	<1.00
Caruso Elementary	5-20-2017	6-14-2017	21-CE-WC	C-104 HALL	<1.00
Caruso Elementary	5-20-2017	6-14-2017	22-CE-WC	C-104 HALL	<1.00
Caruso Elementary	5-20-2017	6-14-2017	23-CE-DW	OUTSIDE PLAYGROUND	<1.00
Caruso Elementary	4-17-2017	4-25-2017	24 CE S	RM C 104	<1.00
Caruso Elementary	4-17-2017	4-25-2017	25 CE DW	RM B 101	<1.00
Caruso Elementary	4-17-2017	4-25-2017	26 CE DW	RM B 103	<1.00
Caruso Elementary	4-17-2017	4-25-2017	27 CE DW	RM B 105	<1.00
Caruso Elementary	4-17-2017	4-25-2017	28 CE DW	RM B 107	<1.00
Caruso Elementary	4-17-2017	4-25-2017	29 CE WC	A HALL	<1.00
Caruso Elementary	4-17-2017	4-25-2017	30 CE WC	A HALL	<1.00
Caruso Elementary	4-17-2017	4-25-2017	31 CE NS	NURSE OFFICE	1.74
Caruso Elementary	4-17-2017	4-25-2017	32 CE NS	NURSE OFFICE	1.02

Caruso Elementary	4-17-2017	4-25-2017	33 CE IM	NURSE OFFICE (2 BOTTLES)	<1.00
Caruso Elementary	4-17-2017	4-25-2017	34 CE NS	NURSE OFFICE	<1.00
Caruso Elementary	4-17-2017	4-25-2017	35 CE S	RM A 111	18.2
Caruso Elementary	4-17-2017	4-25-2017	36 CE WC	RM B200 HALL	2.79
Caruso Elementary	4-17-2017	4-25-2017	37 CE WC	RM B200 HALL	<1.00
Caruso Elementary	4-17-2017	4-25-2017	38 CS WC	RM B200G HALL	<1.00
Caruso Elementary	4-17-2017	4-25-2017	39 CE WC	RM B200G HALL	<1.00
Caruso Elementary	4-17-2017	4-25-2017	40 CE S	RM B210	<1.00
Caruso Elementary	4-17-2017	4-25-2017	41 CE	RM B300G HALL	<1.00
Caruso Elementary	4-17-2017	4-25-2017	42 CE	RM B300G HALL	<1.00
Caruso Elementary	4-17-2017	4-25-2017	43 CE	RM B310	<1.00
Caruso Elementary	4-17-2017	4-25-2017	44 CE	RM B300L HALL	1.12
Caruso Elementary	4-17-2017	4-25-2017	45 CE	RM B300L HALL	<1.00
Caruso Elementary	4-17-2017	4-25-2017	46 ASTM	BLANK	<1.00
Caruso Pre-K	4-17-2017	4-25-2017	1 CPK DW	RM 1	1.94
Caruso Pre-K	4-17-2017	4-25-2017	2 CPK DW	RM 3	<1.00
Caruso Pre-K	4-17-2017	4-25-2017	3 CPK DW	RM 5	5.55
Caruso Pre-K	4-17-2017	4-25-2017	4 CPK DW	MAIN OFFICE	<1.00
Caruso Pre-K	4-17-2017	4-25-2017	5 CPK NS	NURSE OFFICE	1.32
Caruso Pre-K	4-17-2017	4-25-2017	6 CPK DW	RM 11	<1.00
Caruso Pre-K	4-17-2017	4-25-2017	7 CPK DW	RM 2	2.25
Caruso Pre-K	4-17-2017	4-25-2017	8 CPK DW	RM 4	4.98
Caruso Pre-K	4-17-2017	4-25-2017	9 CPK DW	RM 6	1.76
Caruso Pre-K	4-17-2017	4-25-2017	10 CPK DW	RM 7	<1.00
Caruso Pre-K	4-17-2017	4-25-2017	11 CPK DW	RM 8	<1.00
Caruso Pre-K	4-17-2017	4-25-2017	12 CPK DW	RM 10	<1.00
Caruso Pre-K	4-17-2017	4-25-2017	13 ASTM	BLANK	<1.00
Port Monmouth Pre-K	4-13-2017	4-27-2017	1 PMR DW	RM 11	4.44
Port Monmouth Pre-K	4-13-2017	4-27-2017	2 PMR DW	RM 13	<1.00
Port Monmouth Pre-K	4-13-2017	4-27-2017	3 PMR DW	RM 10	<1.00
Port Monmouth Pre-K	4-13-2017	4-27-2017	4 PMR DW	RM 12	<1.00
Port Monmouth Pre-K	4-13-2017	4-27-2017	5 PMR DW	RM 9	<1.00
Port Monmouth Pre-K	4-13-2017	4-27-2017	6 PMR DW	RM 8	<1.00
Port Monmouth Pre-K	4-13-2017	4-27-2017	7 PMR DW	RM 4	<1.00
Port Monmouth Pre-K	4-13-2017	4-27-2017	9 PMR DW	RM 3	<1.00
Port Monmouth Pre-K	4-13-2017	4-27-2017	10 PMR DW	RM 1	<1.00
Port Monmouth Pre-K	4-13-2017	4-27-2017	12 ASTM BLANK	BLANK	<1.00

**Appendix D Floor Plan(s)**

**Joseph R. Bolger  
Middle School**  
Keansburg, New Jersey

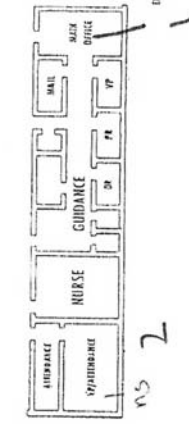
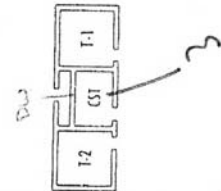
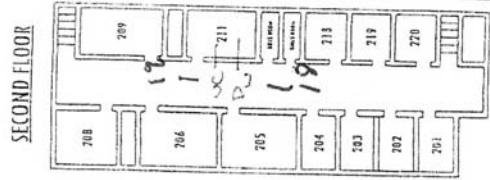
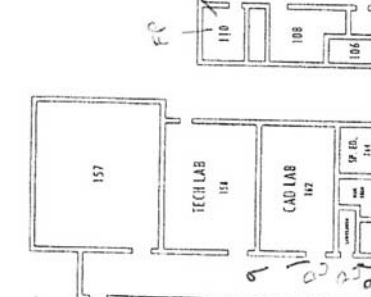
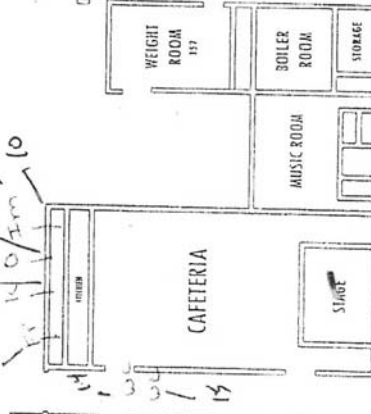
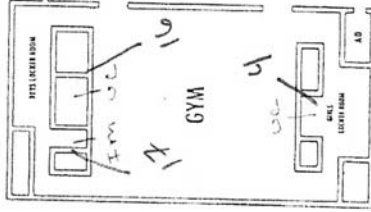
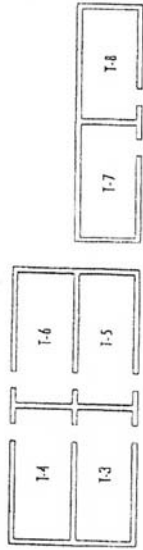


1410 20th March 1968

# KEANSBURG HIGH SCHOOL

1968

- SH - Service line
- DWB - Drinking water bubbles
- NS - noise sink
- WE - water cooler
- IM - ice machine
- FR - food prep sink
- W - Wettle
- O - oven

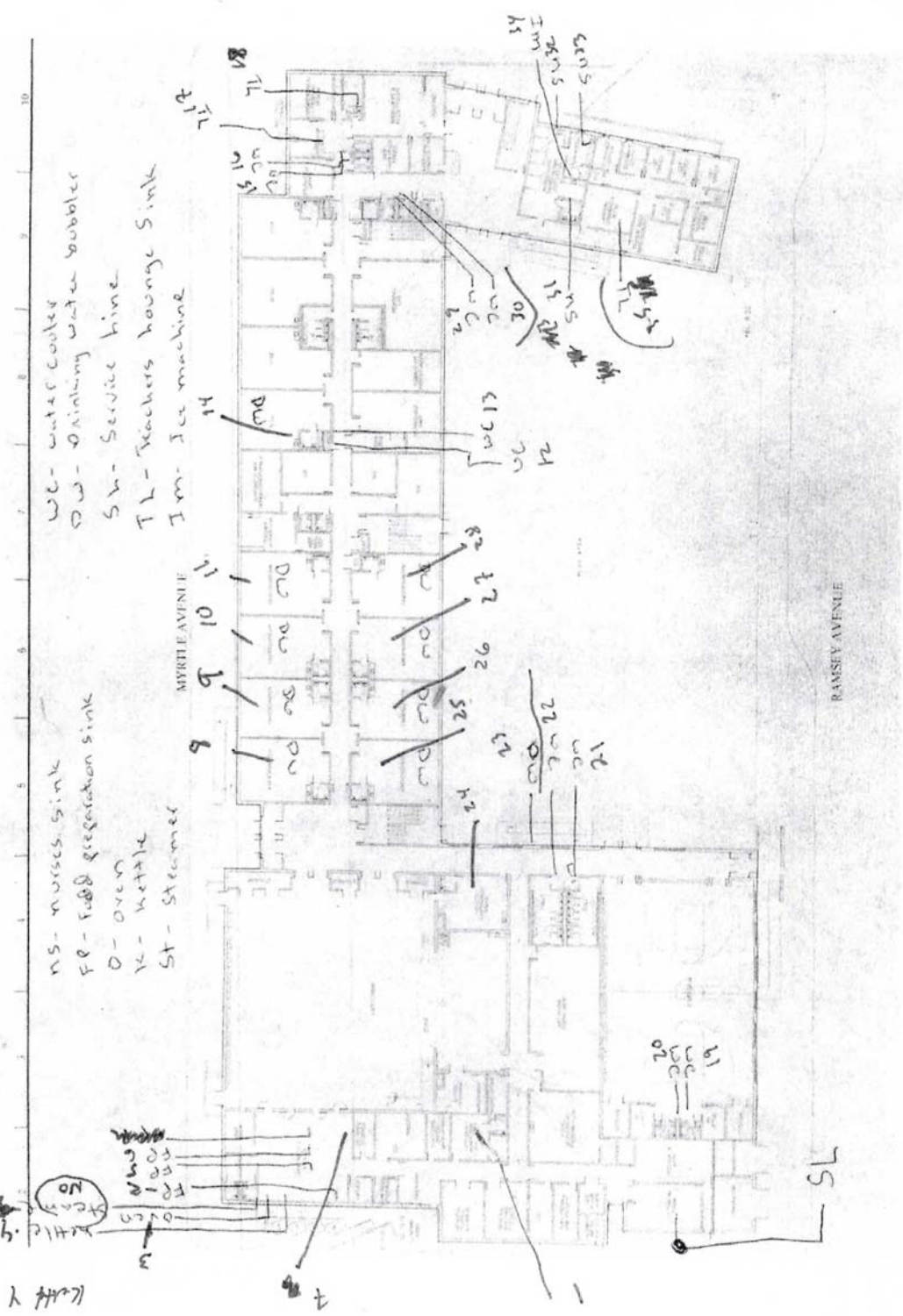


Cartuso Etem

7/15/2016

IMG\_1053.JPG

81 Francis Place



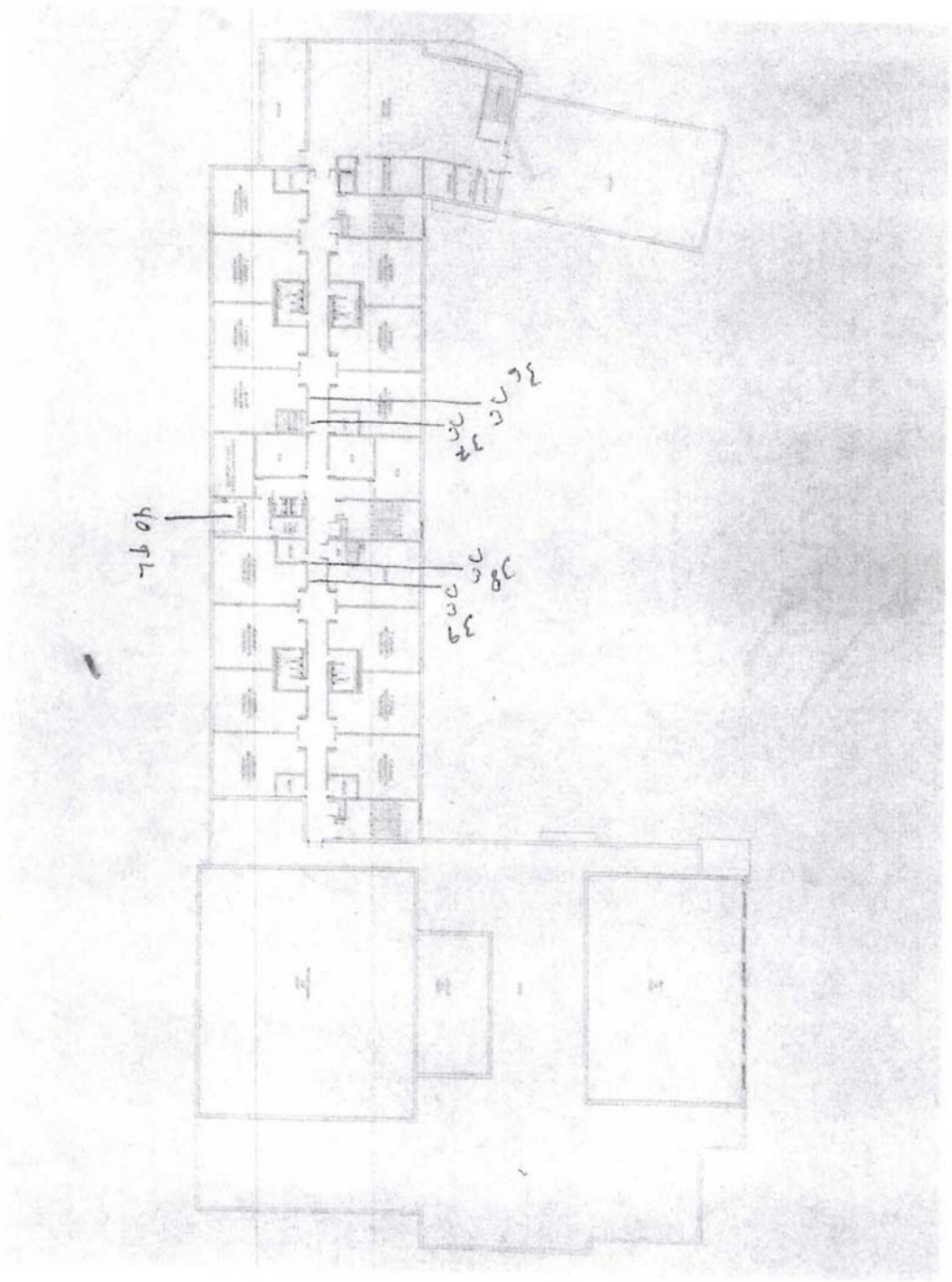
1st Floor

<https://mail.google.com/mail/u/0/#inbox/155cab076242bc487?project=1>

Curso Bfen

7/15/2016

IMG\_1054.JPG



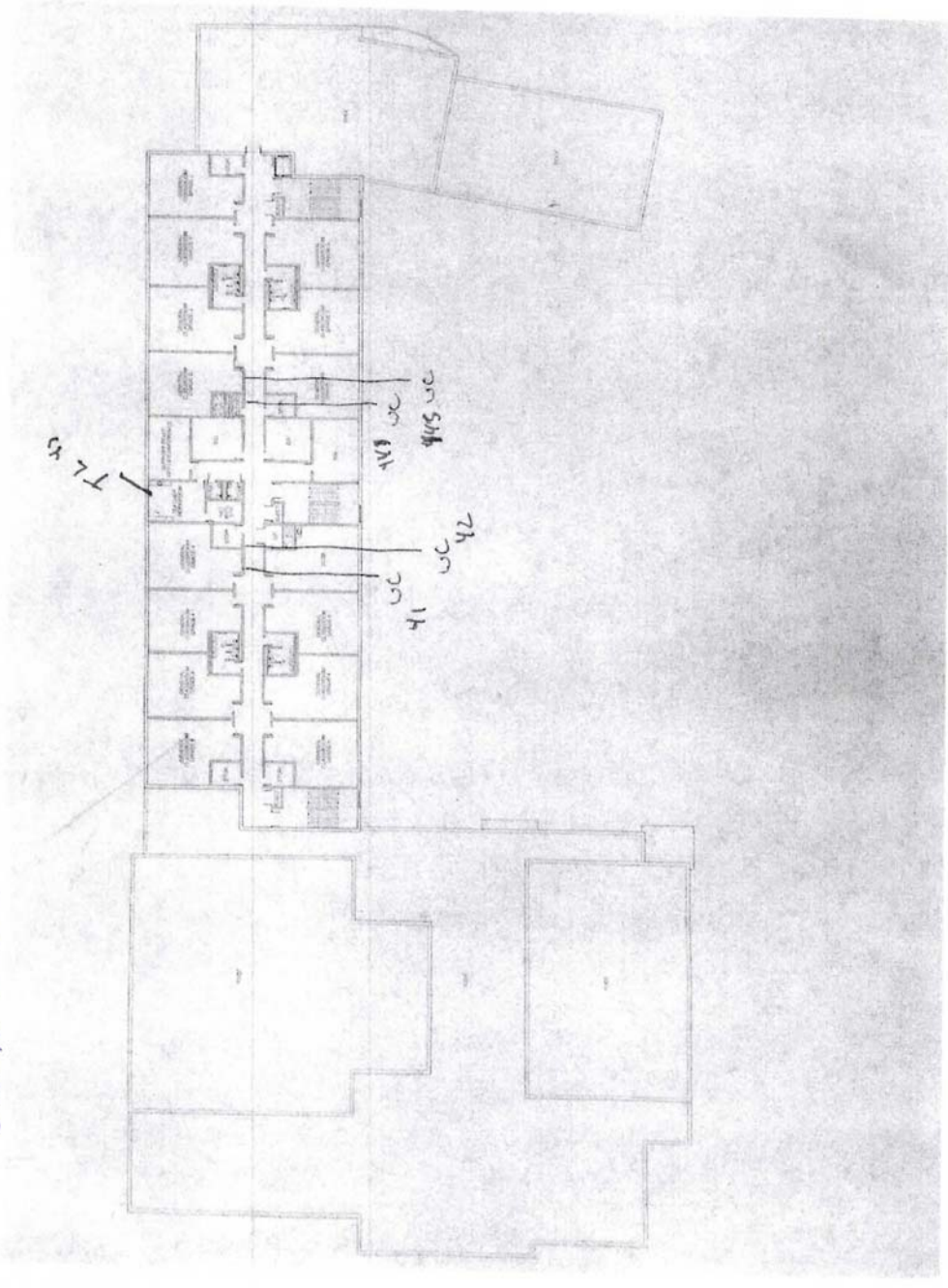
<https://mail.google.com/mail/u/0/#inbox/155cab176242e487projector=1>

2nd F106K

7/15/2016

Caruso Elem

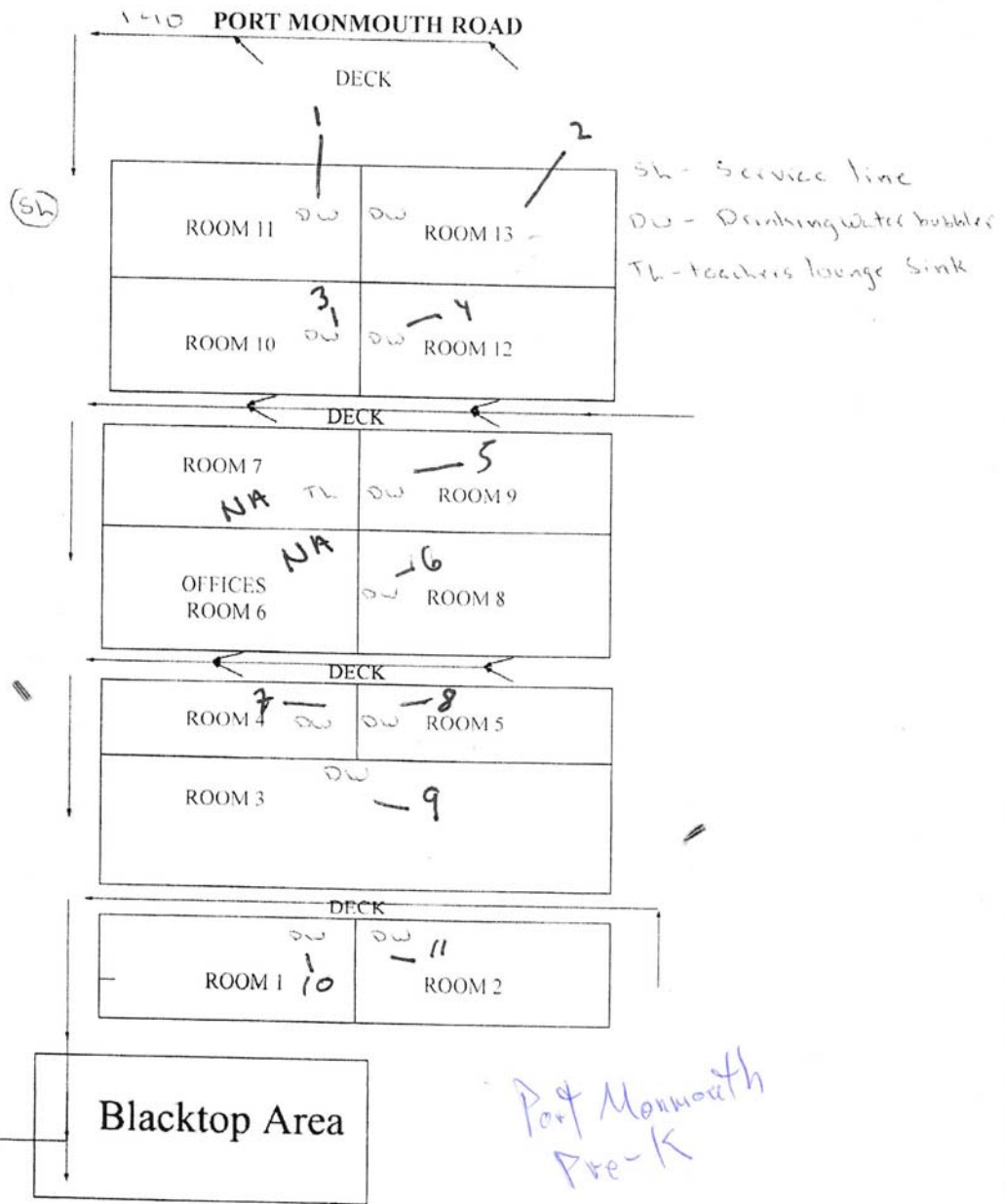
IMG\_1055.JPG



<https://mail.google.com/mail/u/0/?inbox=155cab1762a2be18> projector=1

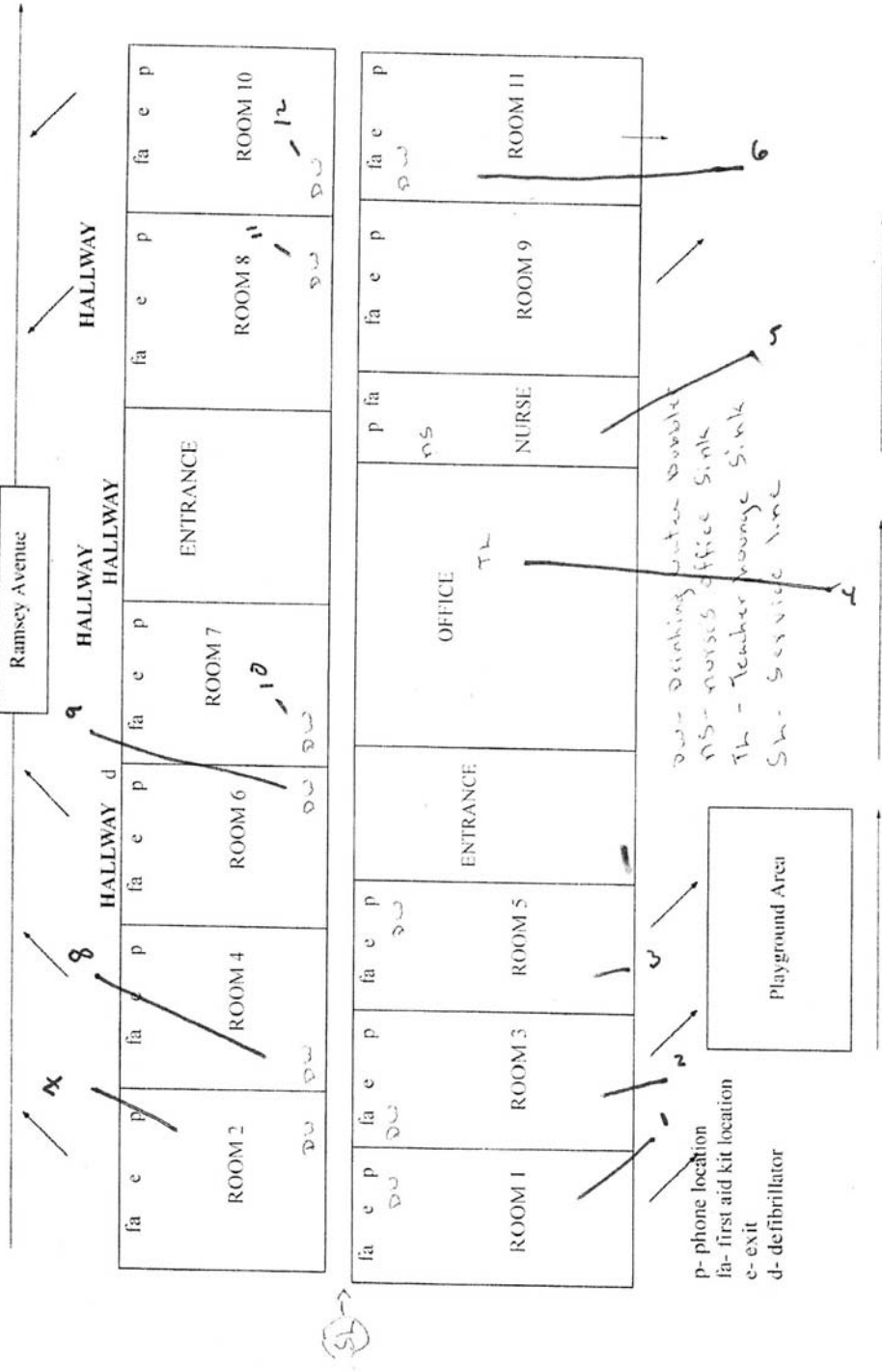
2nd Floor





161 Ramsey Ave.

CARUSO PREK SITE



## **Appendix E      Laboratory Data**